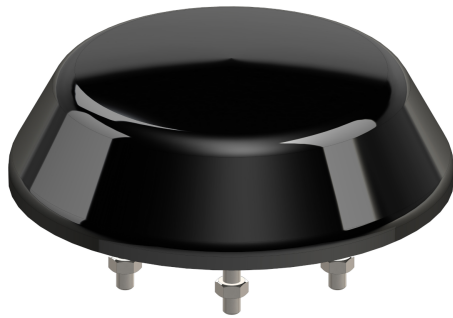


Antenna-Railway-4N2W

Railway Antenna with 4x4 MIMO 5G + MIMO WLAN + 3m Cable

Omnidirectional multiband antenna for signal enhancement in 5G, 4G, 3G, 2G and WLAN networks.



Keyfeatures

WiFi / WLAN	MIMO 2.4 / 5 GHz
Cellular	MIMO 5G/ LTE / UMTS / GSM / GSM-R
Railway	EN50155, EN45545

Specifications

Mobile / Cellular	Standard	4 x 5G / LTE / UMTS / GSM / GSM-R 5G Bands: 1, 2, 3, 5, 7, 8, 12, 20, 25, 28, 65, 66, 70, 80, 81, 82, 83, 84, 86 - TDD Bands: 34, 38, 39, 40, 41, 78 LTE Bands: 1, 2, 3, 4, 5, 7, 8, 10, 12, 13, 14, 17, 18, 19, 20, 23, 25, 26, 27, 28, 29, 30, 65, 66, 67, 68, 69, 70, 85 - TDD Bands: 33, 34, 35, 36, 37, 38, 39, 40, 41, 44, 53 UMTS Bands: 1, 2, 3, 4, 5, 6, 7, 8, 9, 10, 12, 13, 14, 19, 20, 25, 26 - TDD Bands: 33, 34, 35, 36, 37, 38, 39, 40 GSM Bands: 710, 750, 810 T-GSM, 850, 900 P, 900 E, 900 R, 1800 DCS, 1900 PCS Frequency 694 - 960, 1710 - 2690, 3100 - 3800
	Specification	Gain 7,2 dBi (LTE 700, GSM-R) / 7,9 dBi (GSM 1800, UMTS), 10,5 dBi (LTE 2600, 5G) VSWR ≤ 1,8 typ. Impedance 50 Ohm Radiation omnidirectional
	Connectors	4x N female Type N Gender Female
WiFi / WLAN	Standards	2 x Dual-band WLAN 2.4/5 GHz
	Specification	Frequency 2400 - 2500, 5180 - 5835 Gain 7,6 dBi (WLAN 2.4) / 8,1 dBi (WLAN 5) VSWR ≤ 1,8 typ. Impedance 50 Ohm Radiation omnidirectional
	Connectors	2x N female Type N Gender Female
Mechanical	Dimensions	Diameter 200 mm Height 60 mm
	Weight	1700 g
	Mounting	Rooftop with screws no ground plane needed
	Color	black
Environment	Operating Temperature	-60°C to +85°C
	Ingress Protection Level	IPX9k IP6X
Certifications	Compliance Standards	EN 50155, EN 50122, EN 50124, IEC 60068, IEC 61373, ISO 20653, ISO 9227, EN 45545-2 2014/30/EU; 2006/28/EC; 2002/95/EC EN 50122, EN 50124, IEC 60068, IEC 61373, ISO20653, ISO 9227, 2006/28/EC; 2002/95/EC
	Domain	Railway

Extension Cables	Cellular	4 x Ant-Cable-Railway-01-Nm-TNCm-3 / 3 m / N male / TNC male
	WLAN	2 x Ant-Cable-Railway-01-Nm-TNCm-3 / 3 m / N male / TNC male
Other	Order Code	Antenna-Railway-4N2W