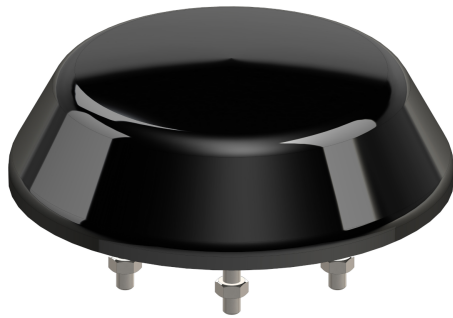


# Antenna-Railway-4N

## Railway Antenna with 4x4 MIMO 5G + EN50155 + 3m Cable

Omnidirectional multiband antenna for signal enhancement in 5G, 4G, 3G, 2G and GSM-R antenna.



### Keyfeatures

<b>Cellular</b>	MIMO 5G/ LTE / UMTS / GSM / GSM-R
<b>Railway</b>	EN50155, EN45545

### Specifications

<b>Mobile / Cellular</b>	<b>Standard</b>	4 x 5G / LTE / UMTS / GSM / GSM-R <b>5G</b> Bands: 1, 2, 3, 4, 5, 7, 8, 12, 20, 25, 28, 65, 66, 70, 80, 81, 82, 83, 84, 86 - TDD Bands: 34, 38, 39, 40, 41, 78 <b>LTE</b> Bands: 1, 2, 3, 4, 5, 7, 8, 10, 12, 13, 14, 17, 18, 19, 20, 23, 25, 26, 27, 28, 29, 30, 65, 66, 67, 68, 69, 70, 85 - TDD Bands: 33, 34, 35, 36, 37, 38, 39, 40, 41, 44, 53 <b>UMTS</b> Bands: 1, 2, 3, 4, 5, 6, 7, 8, 9, 10, 12, 13, 14, 19, 20, 25, 26 - TDD Bands: 33, 34, 35, 36, 37, 38, 39, 40 <b>GSM</b> Bands: 710, 750, 810 T-GSM, 850, 900 P, 900 E, 900 R, 1800 DCS, 1900 PCS <b>Frequency</b> 694 - 960, 1710 - 2690, 3100 - 3800
	<b>Specification</b>	<b>Gain</b> 7,2 dBi (LTE 700, GSM-R) / 7,9 dBi (GSM 1800, UMTS), 10,5 dBi (LTE 2600, 5G) <b>VSWR</b> $\leq$ 1,8 typ. <b>Impedance</b> 50 Ohm <b>Radiation</b> omnidirectional
	<b>Connectors</b>	<b>4x N female</b> <b>Type N</b> <b>Gender</b> Female
<b>Mechanical</b>	<b>Dimensions</b>	<b>Diameter</b> 200 mm
	<b>Weight</b>	<b>Height</b> 60 mm
	<b>Mounting</b>	1700 g
	<b>Color</b>	Rooftop with screws no ground plane needed black
<b>Environment</b>	<b>Operating Temperature</b>	-60°C to +85°C
	<b>Ingress Protection Level</b>	IPX9k IP6X
<b>Certifications</b>	<b>Compliance Standards</b>	EN 50155, EN 50122, EN 50124, IEC 60068, IEC 61373, ISO 20653, ISO 9227, EN 45545-2 2014/30/EU; 2006/28/EC; 2002/95/EC
	<b>Domain</b>	EN 50122, EN 50124, IEC 60068, IEC 61373, ISO20653, ISO 9227, 2006/28/EC; 2002/95/EC Railway
<b>Extension Cables</b>	<b>Cellular</b>	4 x Ant-Cable-Railway-01-Nm-TNCm-3 / 3 m / N male / TNC male
<b>Other</b>	<b>Order Code</b>	Antenna-Railway-4N