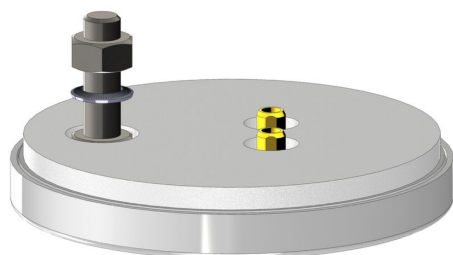


Antenna-Railway-Indoor-01-2WJq

Bahntaugliche Innen-Antenne mit MIMO WLAN + EN50155 + 3m Kabel

Vertikal- und kreuzpolarisierte Dual-Band-Antenne zur Signalverbesserung in WLAN-Netzwerken.



Hauptmerkmale

WiFi / WLAN	MIMO 2.4 / 5 GHz
Railway	EN50155, EN45545
Coach	ECE R118

Spezifikation

WiFi / WLAN	Standards	2 x Dual-band WLAN 2.4/5 GHz Frequency (MHz) 2400 - 2500, 5180 - 5835
	Specification	Gain 8,4 dBi (WLAN 2.4) / 9,1 dBi (WLAN 5) VSWR ≤ 1,8 typ. Impedance 50 Ohm Radiation omnidirectional
	Connectors	2x SMA female
Mechanical	Dimensions	Diameter 96 mm Height 23 mm
	Weight	120 g
	Mounting	Rooftop with screws
	Color	White
Environment	Operating Temperature	-40°C bis +80°C
	Ingress Protection Level	IP42
Certifications	Compliance Standards	EN 50155, EN 45545-2, ECE R118 based on 100-57-61-02.4 IEC 61373
	Domain	MTBF 16.382.700 h / 1.870 years according SN29500 at environmental temperature 40 °C Railway
Extension Cables	WLAN	2 x Ant-Cable-Railway-01-SMAm-QMAm-3 / 3 m / SMA male / QMA-m
Other	Order Code	Antenna-Railway-Indoor-01-2WJq